

Statewide Meeting 2023



## Uniform Crime Reporting Updates

### Today's Overview



**01** ICRIME Review

**03** FBI Specifics

**02** Errors/Warnings

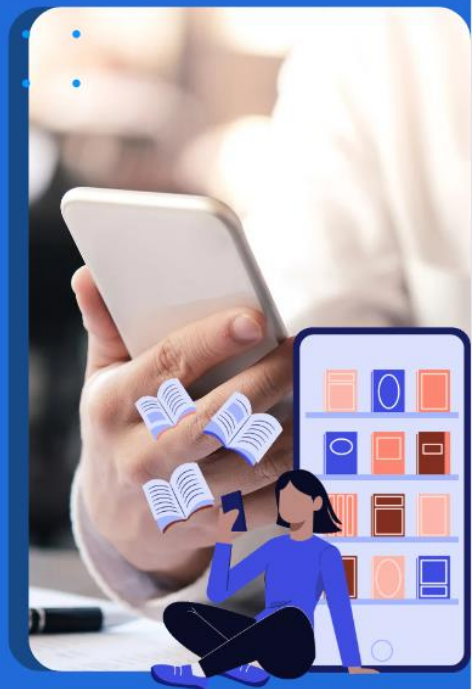
**04** Updates

# 01 ICRIME Review



## GOALS OF UCR

Accurate crime data  
Resource and support  
Increase knowledge



# IOWA UCR PROGRAM STAFF

general email: [ibrdata@dps.state.ia.us](mailto:ibrdata@dps.state.ia.us)

**REBECCA DYER**  
[rdyer@dps.state.ia.us](mailto:rdyer@dps.state.ia.us)



**KIM ADAMS**  
[kadams@dps.state.ia.us](mailto:kadams@dps.state.ia.us)



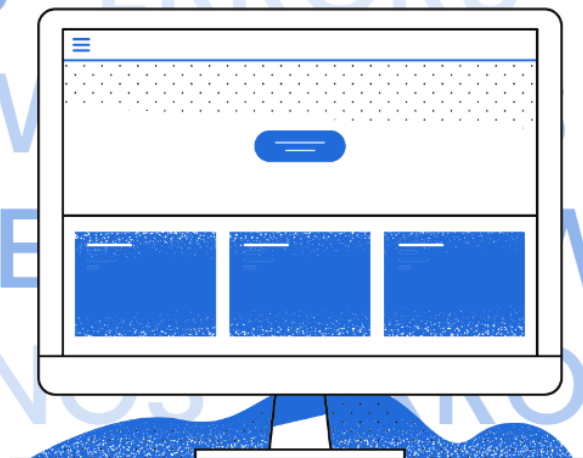
## ICRIME DEMONSTRATION

Search incidents, upload files, basic navigation



WARNINGS ERRORS WA  
E  
A  
RS  
WARNINGS ERRORS  
WARNINGS ERRORS WA

02



## REVIEW PURPOSES



### Review Upload

Identify where to find error and warning messages



### Correct Errors

Locate and modify incidents with errors



### Check Warnings

Clear or modify warnings by verifying information

# IMPORTANCE



## FIDELITY

Provides exactness to crime data within Iowa.

## ACCURACY

Correct information is provided for state and national statistics.

## DEVELOPMENT

Increases knowledge of UCR, data elements, segments, etc.



SEARCH



REVIEW

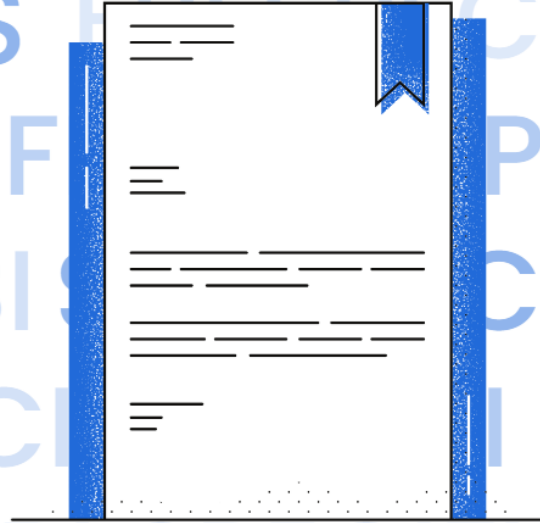


CORRECT

ICRIME direct  
modifications.

# DEMONSTRATION

03



## FBI REPORTS



CARGO THEFTS  
Data Element 2A.



HOMICIDE DATA  
Includes all homicide  
offenses.



BIAS MOTIVATION  
Data Element 8A.



EMPLOYEE DATA  
Sworn and Non-Sworn  
employees.

# Cargo Theft



Data Element 2A

Individual as victim is rare



Residence as location does not meet moving in commerce



Property code red flags include:

09- Credit/Debit Cards  
10- Drugs/Narcotics  
16- Household Goods  
20- Money

## Bias Motivation



99 Unknown is Temporary Code



Based on Investigation



One Comment Does Not Automatically Score here

# Homicide Data

Report all homicide offenses.

Data is pulled statewide and reviewed by the FBI.

Audits will be completed to ensure incidents are captured.



## demonstration

# Employee Data

Updated annually in November.

Completed by LEA in ICRIME.



A stylized hourglass with blue sand flowing through it. The top bulb is filled with blue sand and contains a large blue star and several small white plus signs. The bottom bulb is also filled with blue sand and contains a large blue star and several small white plus signs. The hourglass is set against a background of faint, repeating text that reads "UPDATE".



An illustration depicting business growth and data analysis. It features three stylized bar charts of increasing height. A person in a blue shirt and black pants is pushing the first bar, while another person in a black shirt and blue pants is pushing the third bar. A third person, wearing a blue suit and a face mask, is sitting on top of the second bar, holding a large pie chart. The pie chart is divided into four segments: one white, one blue with dots, one solid blue, and one blue with a grid pattern. A speech bubble with three dots is above the first bar. A black arrow points upwards and to the right, passing through the bars. The background is white with some blue foliage at the base of the bars.



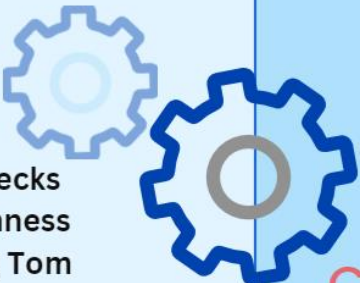
## Retired Codes

90A = Bad Checks  
90E = Drunkenness  
90H = Peeping Tom

## Retired Locations

22 = School/College

**EFFECTIVE JULY 16**



90A = Bad Checks  
90E = Drunkenness  
90H = Peeping Tom

**90Z = All Other  
Offenses**

22 = School/College

**52 = School-  
College/University**

**53 = School-  
Elementary/Secondary**

**USE THESE!**



# 2023 UCR UPDATES

Technical  
Specifications  
Manual

Vendor  
Communication

NIBRS Manual

Iowa UCR  
Manual

90Z  
Additions

## Vendors

New World/Tyler Technologies

MotorolaSolutions

TAC10

All Points

ShieldWare

CentralSquare

TEG

TraCS

CrimeStar

CIS

# SCHEDULE

QUARTER 1	QUARTER 2	QUARTER 3	QUARTER 4
January-March 2023	April-June 2023	July-September 2023	October-December 2023
• Deadline April 22, 2023	• Deadline July 22, 2023	• Deadline October 22, 2023	• Deadline January 22, 2024

All monthly submissions are due the  
**15th** of every month.

## RESOURCES



All resources or training available  
for UCR are available within  
ICRIME systems.





## GET IN TOUCH

**Email**

[rdyer@dps.state.ia.us](mailto:rdyer@dps.state.ia.us)

[kadams@dps.state.ia.us](mailto:kadams@dps.state.ia.us)

[ibrdata@dps.state.ia.us](mailto:ibrdata@dps.state.ia.us)

**Call us**

515-725-6251

515-725-6321

